

Hand slide valve(3/2 way)

HSV Series



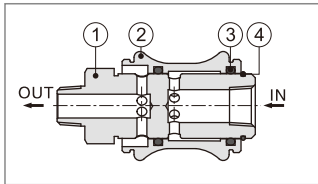
Symbol



Product feature

1. There are several ways of internal and external thread connection, suitable for the application in different pipeline systems.
2. The direction-change slides smoothly and has good hand feeling.
3. There is large effective circulating area.
4. The valve spool surface is treated with acid washing passivation, and the surface of valve body is oxidized to keep the color for a long time.

Inner structure



No.	Item
1	Valve plug
2	Body
3	O-ring
4	Clip

Specification

Model	HSV06	HSV08	HSV10	HSV15	HSV20	HSV25
Fluid	Air (to be filtered by 40 μm filter element)					
Operating	Manual control direct acting type					
Port size [Note1]	1/8"	1/4"	3/8"	1/2"	3/4"	1"
Orifice size	23.0mm ² (Cv=1.28)	40.0mm ² (Cv=2.20)	62.0mm ² (Cv=3.50)	140.0mm ² (Cv=7.80)	250.0mm ² (Cv=13.80)	392.0mm ² (Cv=21.78)
Valve type	3/2 Way					
Lubrication	Not required					
Pressure range	0~1.0MPa(0~145psi)					
Proof pressure	1.5MPa(215psi)					
Temperature	-20~70°C					
Material body	Aluminum alloy					

[Note1] G thread is available.

Ordering code

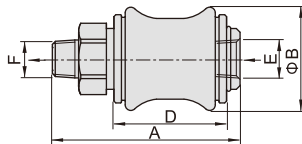
HSV 08 SS G

① ② ③ ④

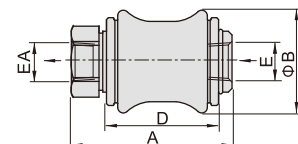
① Model	② Port size	③ Dovt thread	④ Thread type
HSV: Hand slide valve	06: 1/8" 08: 1/4" 10: 3/8" 15: 1/2" 20: 3/4" 25: 1"	Blank: Standard SS: Double male thread FF: Double female thread SF: Male and female thread	G: G Thread

Dimensions

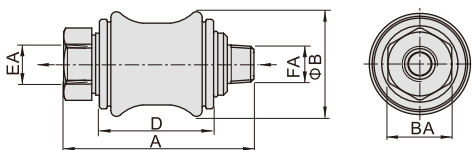
Standard



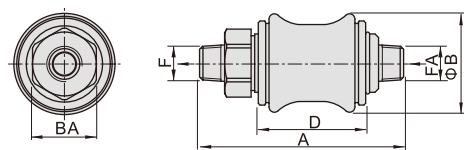
Double female thread (FF)



Male and female thread (SF)



Double male thread (SS)



Model/Item	A				B	BA	D	E	EA	F	FA
	Standard	Double female thread	Male and female thread	Double male thread							
HSV06	50	43	50	57	27.5	17	30	1/8"	1/8"	1/8"	1/8"
HSV08	58	47	58	69	30	19	32.5	1/4"	1/4"	1/4"	1/4"
HSV10	68.5	55.5	68.5	81.5	35.5	22	39	3/8"	3/8"	3/8"	3/8"
HSV15	85.5	70.5	85.5	100.5	44	30	50	1/2"	1/2"	1/2"	1/2"
HSV20	96.5	79.5	96.5	113.5	53.5	36	58	3/4"	3/4"	3/4"	3/4"
HSV25	114.5	96.5	114.5	132.5	65.5	44	70	1"	1"	1"	1"