

Metal one-touch fittings

Ordering code

GBPC 6 01



① Model		② Port size	③ Thread connection
GBPC: Metal male connector (G thread)	GBPCF: Metal female connector (G thread)	4 : Φ4mm 6 : Φ6mm 8 : Φ8mm 10 : Φ10mm 12 : Φ12mm	M5 : M5X0.8 01 : G1/8 02 : G1/4 03 : G3/8 04 : G1/2
GBPMF: Metal bulkhead female connector(G thread)			

GBPM 6



① Model	② Port size
GBPM: Metal bulkhead connector (G thread)	4 : Φ4mm 6 : Φ6mm 8 : Φ8mm 10 : Φ10mm 12 : Φ12mm

Specification

Operating pressure range	0~9kgf/cm²(0~0.9MPa)
Negative pressure	-750mmHg(10Torr)
Proof pressure	1.5MPa
Ambient and fluid temperature (°C)	0~150
Applicable tubing	Soft nylon or polyurethane
Color	Gray/black

Note: The temperature resistance level of the tubing should be confirmed first when used in high temperature environments.

Product feature

1. High flow capacity; The flow rate of these fittings is equivalent to that of the adaptable tubes.
2. Inserting or removal tubing is simple and convenient, and the connecting portion is reliable and durable.
3. Thread is attached with a sealing gasket, to ensure no leakage of the threaded connection part.
4. The fitting metal body adopts a special nickel-plating process, which has good corrosion resistance.
5. Metal fittings can be used in high temperature environment.

Table for interface port and tube O.D.

Product series	Thread type	Port size				
		Φ4	Φ6	Φ8	Φ10	Φ12
GBPC	M5	•	•			
	G1/8	•	•	•	•	
	G1/4	•	•	•	•	•
	G3/8		•	•	•	•
	G1/2				•	•
GBPCF	M5	•	•			
	G1/8	•	•	•		
	G1/4		•	•	•	
	G3/8				•	•
GBPMF	M5					
	G1/8	•	•	•		
	G1/4		•	•	•	
	G3/8				•	•
GBPM	G1/2					•

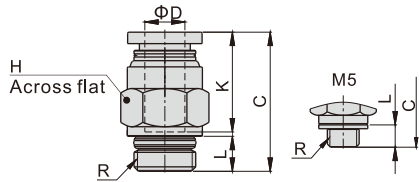
Inner structure

GBPC Series		NO.	Name	Material
	1	Metal connector	Aluminum alloy	
	2	Locating ring	Aluminum alloy	
	3	Spring gasket	Stainless steel	
	4	Locating seat	Aluminum alloy	
	5	Special shape O-ring	Viton	
	6	Straight connector body	Brass	
	7	O-ring	NBR	

Metal one-touch fittings

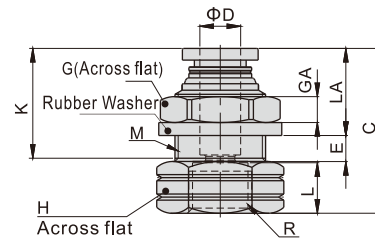
Dimensions

GBPC Series



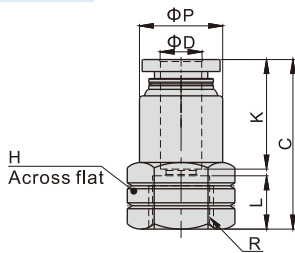
Model\Item	ΦD	R	L	C	K	H	Weight(g)	PCS/bag
GBPC4M5	4	M5X0.8	3.5	19.5	14	9	5.5	10
GBPC401		G1/8	5.5	16.5	13	10	7.9	10
GBPC402		G1/4	6.5	17	13	14	8.7	10
GBPC6M5	6	M5X0.8	3.5	22	16	12	10.1	10
GBPC601		G1/8	5.5	21.5	16	12	13.8	10
GBPC602		G1/4	6.5	20.5	16	14	15.1	10
GBPC603	6	G3/8	7	20	16	19	26	10
GBPC801		G1/8	5.5	25.5	18	14	13.3	10
GBPC802		G1/4	6.5	24.5	18	14	13.5	10
GBPC803	8	G3/8	7	21.5	18	19	25.9	10
GBPC1001		G1/8	5.5	28.5	20.5	17	17.2	10
GBPC1002		G1/4	6.5	28	20.5	17	19.8	10
GBPC1003	10	G3/8	7	24	20.5	19	32.3	10
GBPC1004		G1/2	8.5	22.5	19.5	22	31.9	10
GBPC1202		G1/4	6.5	32.5	22	21	29.4	10
GBPC1203	12	G3/8	7	30	22	21	29.3	10
GBPC1204		G1/2	8.5	27	22	22	37.2	10

GBPMF Series



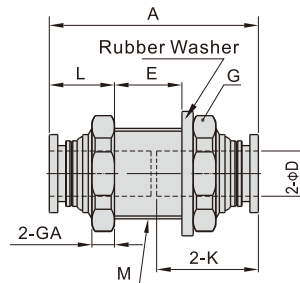
Model\Item	ΦD	R	M	L	C	K	LA	E	GA	G	H	Weight(g)	PCS/bag
GBPMF401	4	G1/8	M12X1	8	25	14	12	4	4	14	14	7.6	10
GBPMF601	6	G1/8	M14X1	8	25	16	12	5	4	17	17	10.4	10
GBPMF602		G1/4	M14X1	11	30	16	12	5	4	17	17	12.2	10
GBPMF801	8	G1/8	M16X1	8	27	18	13	5.5	4	19	19	13.9	10
GBPMF802		G1/4	M16X1	11	31.5	18	13	5.5	4	19	19	15.3	10
GBPMF1002	10	G1/4	M20X1	11	34.5	20.5	14	7.5	5	24	22	26.2	10
GBPMF1003		G3/8	M20X1	12	35.5	20.5	14	7.5	5	24	22	24.4	10
GBPMF1203	12	G3/8	M22X1	12	37	22	15	8	5	27	24	32.6	10
GBPMF1204		G1/2	M22X1	13.5	38.5	22	15	8	5	27	25	31.8	10

GBPCF Series



Model\Item	ΦD	R	ΦP	L	C	K	H	Weight(g)	PCS/bag
GBPCF4M5	4	M5X0.8	9	5	21	14	10	3.5	10
GBPCF401		G1/8	9.5	8	23	14	14	5.3	10
GBPCF6M5	6	M5X0.8	12	5	21	16	12	5.6	10
GBPCF601		G1/8	12.5	8	25	16	14	7.2	10
GBPCF602	6	G1/4	12.5	11	28	16	17	9.2	10
GBPCF801		G1/8	14	8	27	18	14	7.1	10
GBPCF802	8	G1/4	14.5	11	30	18	17	10.6	10
GBPCF1002		G1/4	17	11	32.5	20.5	17	13.5	10
GBPCF1003	10	G3/8	18	12	33.5	20.5	21	17.5	10
GBPCF1203		G3/8	21	12	35	22	21	22	10
GBPCF1204	12	G1/2	21	13.5	36.5	22	21	24.9	10

GBPM Series



Model\Item	ΦD	M	A	K	L	E	G(Across flat)	GA	Weight(g)	PCS/bag
GBPM4	4	M12X1	28.5	14	10	7	14	4	6.4	10
GBPM6	6	M14X1	33	16	10	11	17	4	16.4	10
GBPM8	8	M16X1	37	18	11	13	19	4	15.8	10
GBPM10	10	M20X1	41.5	20.5	12	16	24	5	28.9	10
GBPM12	12	M22X1	45	22	13	17.5	27	6	40.3	10